

DESPIECE

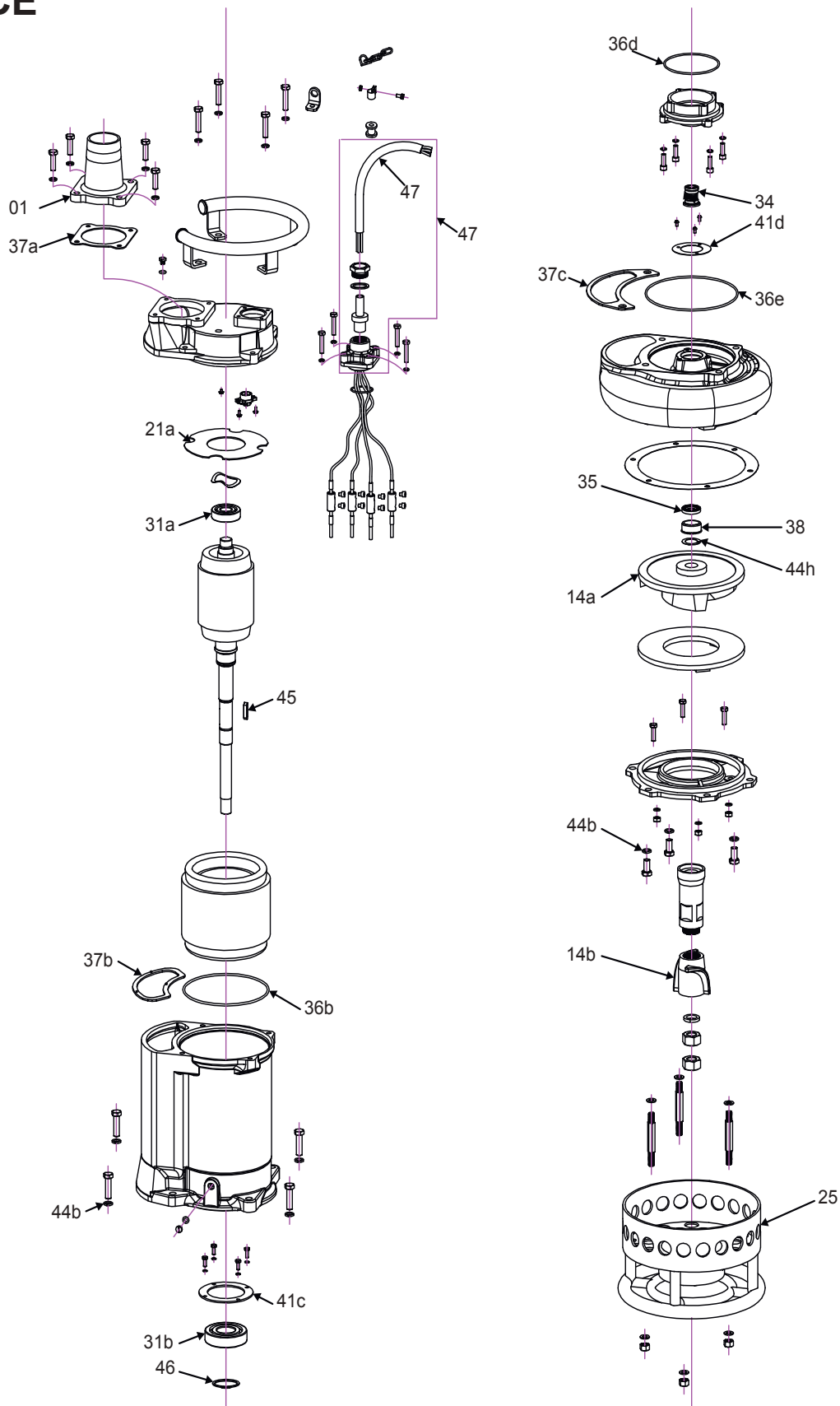


TABLA DE REFACCIONES

POSICIÓN	REFACCION	TANTUM3-50-3230	TANTUM3-50-3460	TANTUM4-75-3230	TANTUM4-75-3460	TANTUM6-100-3230	TANTUM6-100-3460	CÓDIGO
1	ADAPTADOR ESPIGA PARA MANGUERA	✓	✓					R-TANT3-AD-MANG
				✓	✓			R-TANTUM4-AD-MANG
						✓	✓	R-TANTUM6-AD-MANG
25	COLADOR	✓	✓					R-TANT3-COLADOR
				✓	✓			R-TANT4-COLADOR
						✓	✓	R-TANT6-COLADOR
34	SELLO MECANICO	✓	✓					R-FOSS3-SM
				✓	✓	✓	✓	R-TANT4-SM
35	SELLO DE ACEITE	✓	✓					R-FOSS3-SELLO-ACE
				✓	✓	✓	✓	R-TANT4-SELLO-ACE
38	DISTANCIADOR	✓	✓					R-TANT3-DIST-38
				✓	✓	✓	✓	R-TANT4-6-DIST-38
45	CUÑA DE ROTOR	✓	✓					R-FOSS3-4-CUÑA
				✓	✓	✓	✓	R-TANT4-6-CUÑA
46	CANDADO	✓	✓					R-TANT3-CAND-46
				✓	✓			R-TANT4-CANDADO-46
						✓	✓	R-TANT6-CANDADO-46
47	CABLE DE ALIMENTACION	✓	✓					R-TANT3-CABLE
				✓	✓			R-TANT4-CABLE
						✓	✓	R-TANT6-CABLE
14A	IMPULSOR	✓	✓					R-TANT3-IMP
				✓	✓			R-TANT4-IMP
						✓	✓	R-TANT6-IMP
14B	AGITADOR	✓	✓	✓	✓	✓	✓	R-TANT3-4-6-AGITAD
21A	PLACA PROTECTORA	✓	✓					R-TANT3-P-PROTE
				✓	✓			R-TANT4-P-PROTE
31A	BALERO	✓	✓					R-TIDE2-BAL-31B
				✓	✓			R-TANT4-BAL-6306
						✓	✓	R-TIDE3-50-BAL-31B
31B	BALERO	✓	✓					R-FOSS-BAL-6308
				✓	✓			R-TANT4-BAL-6309
						✓	✓	R-TANT6-BAL-3310
36B	O-RING O JUNTA TORICA	✓	✓					R-TANT3-ORING36B
				✓	✓	✓	✓	R-TANT4-6-ORING36C
36D	O-RING O JUNTA TORICA	✓	✓					R-TANT3-ORING36D
36E		✓	✓					R-TANT3-ORING36E
37A	O-RING O JUNTA TORICA			✓	✓	✓	✓	R-TANT4-6-ORING36E
		✓	✓					R-TANT3-JUNTA37A
37B	O-RING O JUNTA TORICA			✓	✓	✓	✓	R-TANT4-6-JUNTA37A
		✓	✓					R-TANT3-JUNTA37B
37C	O-RING O JUNTA TORICA			✓	✓	✓	✓	R-TANT4-6-JUNTA37B
		✓	✓					R-TANT3-JUNTA37C
41C	BASE DE BALERO			✓	✓	✓	✓	R-TANT4-6-JUNTA37C
		✓	✓					R-TANT3-BASE-BAL
41D	BASE SELLO MECANICO			✓	✓			R-TANT4-BASE-BAL
						✓	✓	R-TANT6-BASE-BAL
44B	ARANDELA	✓	✓	✓	✓	✓	✓	R-TANT3-BASE-SM
44H	ARANDELA			✓	✓	✓	✓	R-TANT4-6-ARAN-44B
		✓	✓					R-TANT3-4-ARAN-44H
				✓	✓	✓	✓	R-TANT4-6-ARAN-44H