

**panda**<sup>®</sup>  
pool products

# NOSIS

Decorative Fountain  
Nozzle



TECHNICAL DATA SHEET

# DECORATIVE FOUNTAIN NOZZLE

Enhance your fountain's visual impact by pairing PANDA NOSIS nozzles with bubblers to create a more dynamic and welcoming atmosphere



**BRASS MODELS**



**STAINLESS STEEL MODELS**



## APPLICATIONS



### LINEAR JETS

Creates clean, vertical water streams for architectural and decorative fountain displays.



### LOTUS FLOWER

Produces a flower-shaped spray pattern that enhances fountain aesthetics.



### VOLCANO

Generates a wide, cone-shaped water effect for high-impact fountain displays.

## ADVANTAGES

### CORROSION-RESISTANT DESIGN

Engineered for longevity in harsh environments with superior resistance to corrosive liquids and industrial wastewater

### PRECISION WATER PATTERNS

Engineered to deliver consistent and visually appealing water effects for enhanced fountain aesthetics.

### DURABLE CONSTRUCTION

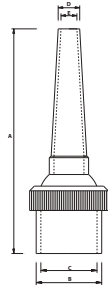
Built to withstand continuous outdoor operation while maintaining reliable performance and appearance.



GTIN-13 (E-COMMERCE CODE)	MODEL	MATERIAL	FEMALE THREADED CONNECTION (in)	*RECOMMENDED SETTINGS FOR OPTIMAL RESULTS				
				OPERATING PRESSURE RANGE (PSI)		FLOW RATE RANGE (GPM)		MAXIMUM SPRAY HEIGHT (ft)
				MINIMUM	MAXIMUM	MINIMUM	MAXIMUM	
7503054318747	N-0.5H-CL-400	BRASS	0.5 NPT	2.17	9.42	2.4	8.7	13.1
7503054318754	N-1H-CL-600		1 NPT	7.25	14.5	9.0	17.4	19.7
7503054318761	NSS-0.5H-CL-400	STAINLESS STEEL	0.5 NPT	2.17	9.42	1.3	6.6	13.1
7503054318778	NSS-1H-CL-600		1 NPT	7.25	14.5	9.0	17.4	19.7

\*You must ensure that the motor pump in the system meets the flow and pressure ranges based on the number of nozzles installed

MODEL	DIMENSIONS (in)					WEIGHT (lb)
	A	B	C	D	E	
N-0.5H-CL-400	2.8	0.9	0.7	0.3	0.2	0.1
N-1H-CL-600	4.7	1.4	1.2	0.5	0.3	0.3
NSS-0.5H-CL-400	3.0	1.0	0.8	0.3	0.2	0.2
NSS-1H-CL-600	4.7	1.4	1.2	0.5	0.3	0.4

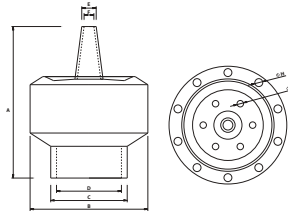


## LOTUS FLOWER

GTIN-13 (E-COMMERCE CODE)	MODEL	MATERIAL	FEMALE THREADED CONNECTION (in)	*RECOMMENDED SETTINGS FOR OPTIMAL RESULTS			
				OPERATING PRESSURE (PSI)	FLOW RATE (GPM)	MAXIMUM DIAMETER (ft)	MAXIMUM SPRAY HEIGHT (ft)
7503054318785	N-0.75H-FL-150	BRASS	0.75 NPT	6	22.2	3.9	4.9
7503054318792	N-1.5H-FL-180		1.5 NPT	9	44.1	5.6	5.9
7503054318808	NSS-1H-FL-150	STAINLESS STEEL	1 NPT	6	30.9	4.3	4.9
7503054318815	NSS-2H-FL-200		2 NPT	12	52.8	5.9	6.6

\*You must ensure that the motor pump in the system meets the flow and pressure ranges based on the number of nozzles installed

MODEL	DIMENSIONS (in)								WEIGHT (lb)
	A	B	C	D	E	F	G	H	
N-0.75H-FL-150	2.7	1.9	1.2	1.0	0.3	0.2	0.1	0.2	0.3
N-1.5H-FL-180	4.1	3.2	2.1	1.8	0.4	0.3	0.2	0.2	0.9
NSS-1H-FL-150	4.4	2.9	1.5	1.2		0.2		0.2	0.2
NSS-2H-FL-200	4.9	3.4	2.5	2.2		0.3		0.3	1.6



## VOLCANO

GTIN-13 (E-COMMERCE CODE)	MODEL	MATERIAL	MALE THREADED CONNECTION (in)	*RECOMMENDED SETTINGS FOR OPTIMAL RESULTS					
				OPERATING PRESSURE RANGE (PSI)		FLOW RATE RANGE (GPM)		MAXIMUM DIAMETER (ft)	MAXIMUM SPRAY HEIGHT (ft)
				MINIMUM	MAXIMUM	MINIMUM	MAXIMUM		
7503054318822	N-0.75M-VC-35	BRASS	0.75 NPT	7.3	14.5	9.0	21.9	1.0	1.1
7503054318839	N-1.5M-VC-80		1.5 NPT			30.9	79.3	1.6	2.6
7503054318846	NSS-1M-VC-40	STAINLESS STEEL	1 NPT	8.7	21.8	15.6	35.1	1.3	
7503054318853	NSS-2M-VC-60		2 NPT			75.0	109.9	2.0	

\*You must ensure that the motor pump in the system meets the flow and pressure ranges based on the number of nozzles installed

MODEL	DIMENSIONS (in)						WEIGHT (lb)
	A	B	C	D	E	F	
N-0.75M-VC-35	4.3	1.0	0.7	1.0	0.9	0.4	0.3
N-1.5M-VC-80	6.1	1.8	1.6	1.8	1.6	0.5	0.8
NSS-1M-VC-40	5.7	1.3	1.1	1.4	1.2	0.4	0.5
NSS-2M-VC-60	6.6	2.3	2.0	2.2	2.0	0.4	1.4

